

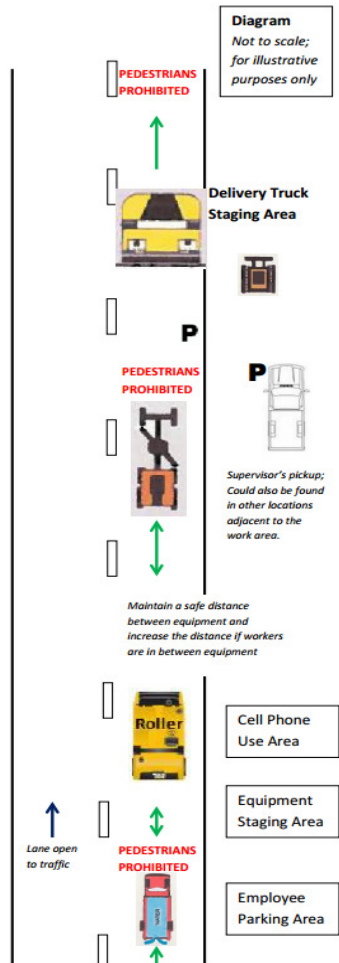
**Internal Traffic Control Plan
PLAN 3: Reclaim - Grade Operations**

All Workers on Site

- A risk assessment shall be conducted prior to beginning work. Every worker has the obligation and the authority to stop unsafe work activities.
- No one engaged in work on the project shall use a cell phone or other electronic device when they are crossing traffic routes, engaged in safety sensitive work, or in areas where the site rules strictly prohibit them.
- Equipment operators should always attempt to mount/dismount equipment on the side that is away from live traffic.
- Equipment operators should remain a safe distance away of ground workers performing work activities.
- Equipment operators must maintain a safe distance from other equipment. That distance should be increased if there are pedestrian workers between equipment.
- Inspectors, quality control and other specialists stay near pickup trucks which are easier to see.

Dump Truck Drivers / Operations

- Backing maneuvers are considered to be high risk activities – Reduce the need to back at all times - If you must back up, take all necessary precautions including the steps below.
- Maintain awareness of those around your vehicle at all times. **IF, AT ANY TIME, YOU LOSE SIGHT OF ANY PERSON AROUND YOUR VEHICLE, THEN YOU SHOULD STOP IMMEDIATELY.**
- An "observer" (also known as a backer, dump person, or spotter) must be guiding you whenever you are backing toward a paver, milling machine, road widener, shuttle buggy or other material transfer vehicle.
- Establish and maintain eye contact with anyone directing you while you are backing. In such situations, a backer should be guiding you the entire time—no matter how little or how far you are backing.
- If, at any time, a backer is not guiding you as you are backing toward a material transfer vehicle, then you should **stop backing immediately.**
- All vehicles with obstructed rear views must be equipped with reverse signal alarms (also known as backup alarms).
- Do not use cell phones or other communication devices at all unless you are in a properly secured, safely located, and completely stopped vehicle that is not performing or waiting to perform operations.
- Dump truck drivers should stay in their truck. All required PPE must be worn when exiting vehicle on site for any reason.



“P” – Pedestrian Workers
Anticipated location of pedestrian workers under typical work conditions. May not be in all noted locations.

Notes/Considerations/Additions:

- Add Channelizing Devices (Cones, Barrels, etc.) along the centerline if being used.
- Add in Flagging Personnel if being used.
- Add in any subcontractors that may be on the project.
- Add in any Quality Control vehicles or personnel that may be on site.
- Add any other equipment or personnel (state inspectors, mechanic, equipment representative, etc.) not depicted.

Equipment List:

- Reclaim Machine
- Grader
- Water Truck
- Skid Steer
- Roller
-
-
-
-
-

Personnel List:

- Reclaim Operator
- Grader Operator
- Laborers
- Supervisor
- Water Truck Driver
- Skid Steer Operator
-
-
-
-